

# MEDICAL DEVICE INITIATIVE

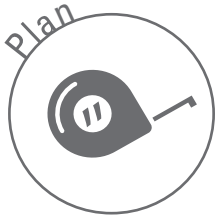
## Medical Device Industry

The medical devices industry is one of the state’s most valuable economic assets. The industry generates billions of dollars in economic output annually, greatly due to its extensive supply chain and successful manufacturing operations.

One-third of the \$38 billion global orthopedic industry is headquartered in nearby Warsaw. Northeast Indiana was ranked the fourth-highest state in venture capital percentage gains from 1999 to 2004.

## EDC Toolbox Solutions

The Whitley County EDC works with clients to *plan, build and equip* their business for success. Starting and growing a business requires the right tools.

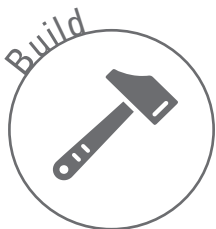


Here are some examples of business projects which the EDC has provided *toolbox solutions*:

**Client:** local startup custom stainless steel instrumentation supplier

**Challenge:** business planning, location, financing, incentives

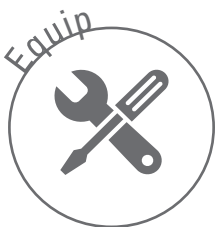
**Toolbox solutions:** completed Lean Startup based course, identified vacant medical office building, negotiated local and state business incentives, obtained low-interest loan financing



**Client:** international electron beam processing supplier

**Challenge:** location, financing, incentives

**Toolbox solutions:** identified location at “shovel ready” business park, secured industrial revenue bond financing and economic development revenue bond incentive, negotiated state business incentives



**Client:** regional employer launching subsidiary to manufacture premium metal alloys

**Challenge:** location, financing, incentives

**Toolbox solutions:** identified vacant industrial building, negotiated local and state business incentives, obtained state equipment grant, secured funding for environmental assessment and site stabilization activities

This institution is an equal opportunity provider and employer

## EDC Programs

**Greenlight & Lean Startup** - Provide aspiring entrepreneurs and existing business owners with the time to evaluate the viability of a business idea in a safe and interactive environment. The Lean Startup business model gives a new venture a solid foundation from day one.

**MarketMaker** - Aligns growth-oriented companies with the right resources to enable or improve growth in existing and adjacent markets

**TrialMaker** - Focuses on company growth in core markets or expansion into adjacent markets by obtaining the voice of the client (VOC), resulting in development and delivery of services targeted to eliminate and/or reduce the specific growth inhibitors

**VentureAccelerator** - Funding, coaching and mentorship program for high-growth potential startups and expansion projects focused on the areas: agribusiness, specialty foods and medical technology

## Medical Device Supply Chain

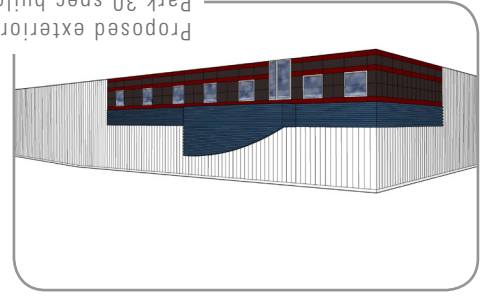
*The following is a list of companies involved in the medical device supply chain in Whitley County:*

- Nanovis
- Numerix
- Pro Systems
- Qualitex
- Quality Inspection & Gage
- Red Star Contract Mfg.
- Restoration Medical Polymers
- Scientific & Regulatory Consultants
- SGS Specialty Group
- Sites Medical
- Sound Ideas
- Summit Business Products
- Blue M Medical
- C&A Tool Engineering
- DOT America
- Engineering Services
- Etavonni Engineering
- Fort Wayne Metals - Adv. Materials Dev.
- Imaging Office Systems
- Impact CNC
- Iotron Industries USA
- Kilgore Manufacturing
- Micropulse

## Buildings & Sites

- Progress Court
- "Shovel Ready" Park 30 Business Center
- 16,200 SF expandable to 32,000 SF
- 2.36 acre site
- Adjacent to US 30

### Park 30 Spec Building



Proposed exterior design for Park 30 spec building

- 201 S Towerview Dr., Columbia City
- Located in Blue River Industrial Park
- 15,000 SF expandable to 16,700 SF
- 11.6 Acre Site
- 1/2 mile from US Hwy 30

### Xios Expandable Building

